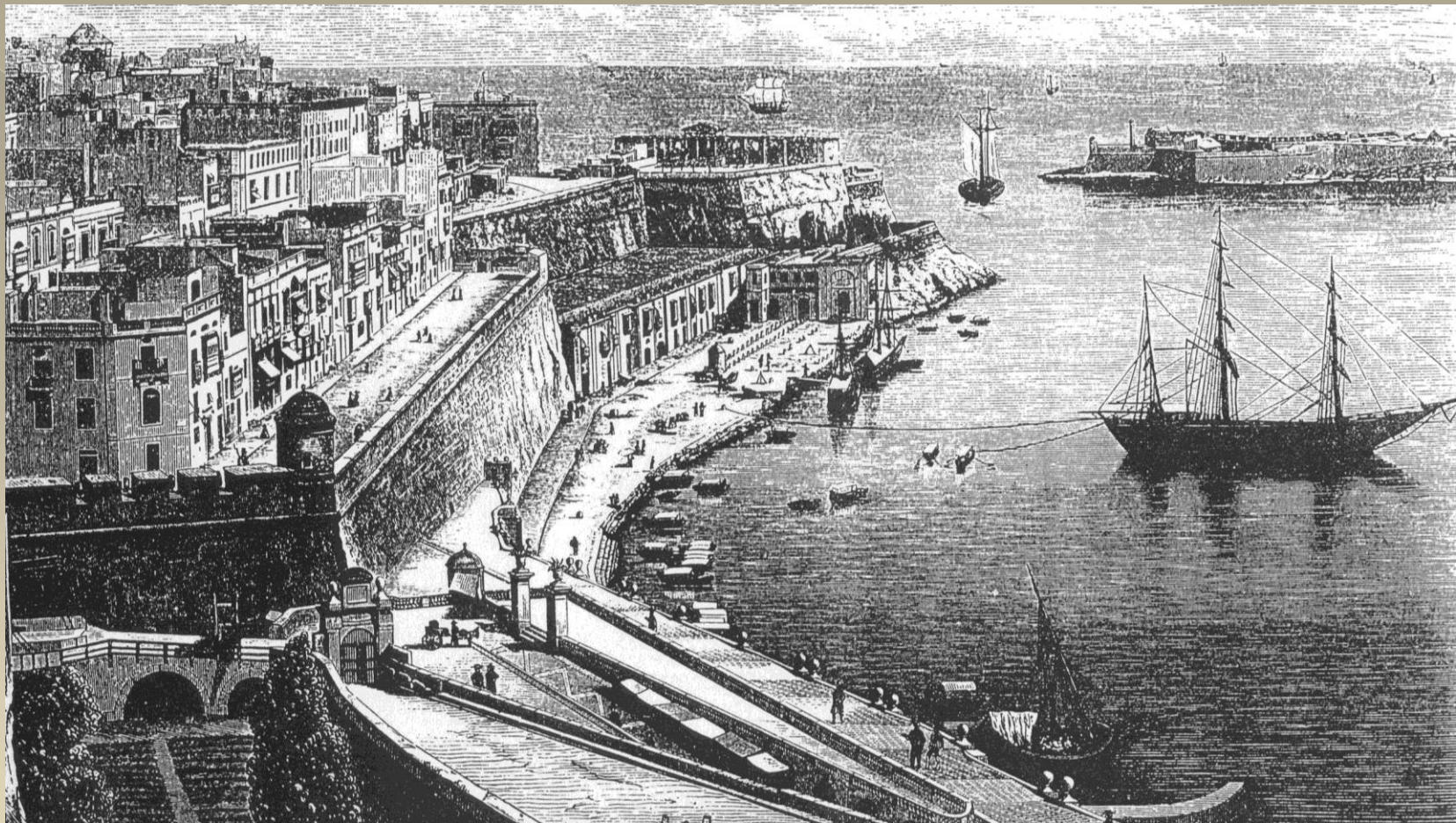


A portrait of an elderly man with glasses, wearing a suit and tie, looking slightly to the left. The background is a dramatic sky with purple and blue clouds over a dark mountain range.

Ewgenju

Borg

Ħaddiem Responsabbli u Nisrani Ġenwin



**Malta fil-bidu tas-seklu għoxrin
kellha bniedem kbir.
Kellha lil Ġorġ Preca**

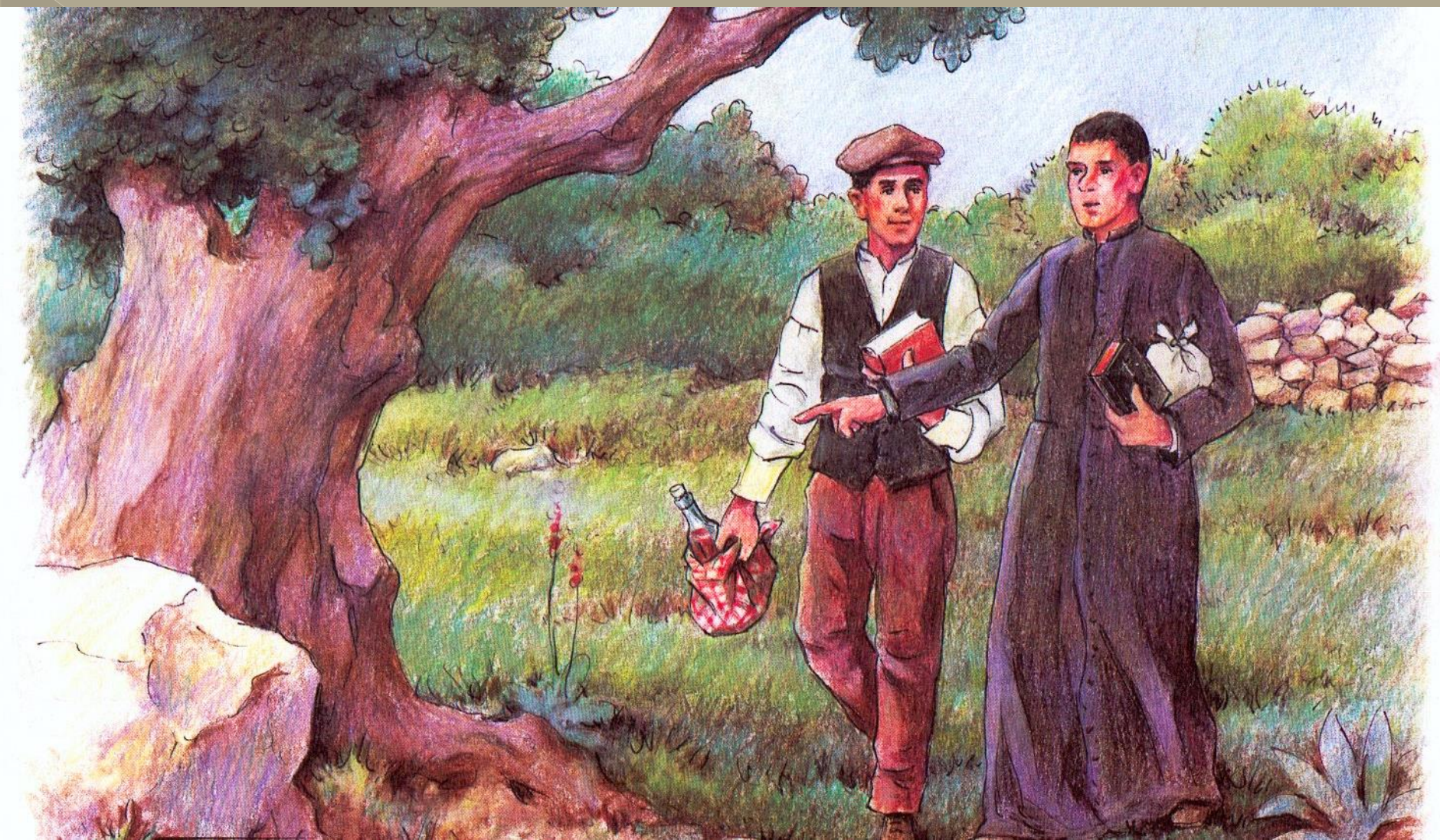


**Dun Ġorġ Preca kien qassis u kien
iħobb jgħallem ħafna.**

Kien
jgħallem
bla
waqfien.



**“Min iħobb lil Alla
mhux kuntent li jħobbu waħdu.”**



**Ewgenju Borġ kien wieħed minn tal-
ewwel li kien mghallem minn Dun Ġorġ**



Carmela Borg, imwiela Mirabelli, omm Ewġenju Borg. Hija kienet ta' nisel Taljan u twieldet Gela, fi Sqallija.

Id-dar fejn twieled Ewġenju Borg li aktar tard saret il-Qasam tal-Museum ta' l-Isla. Illum 54-55 Triq id-Duluri.

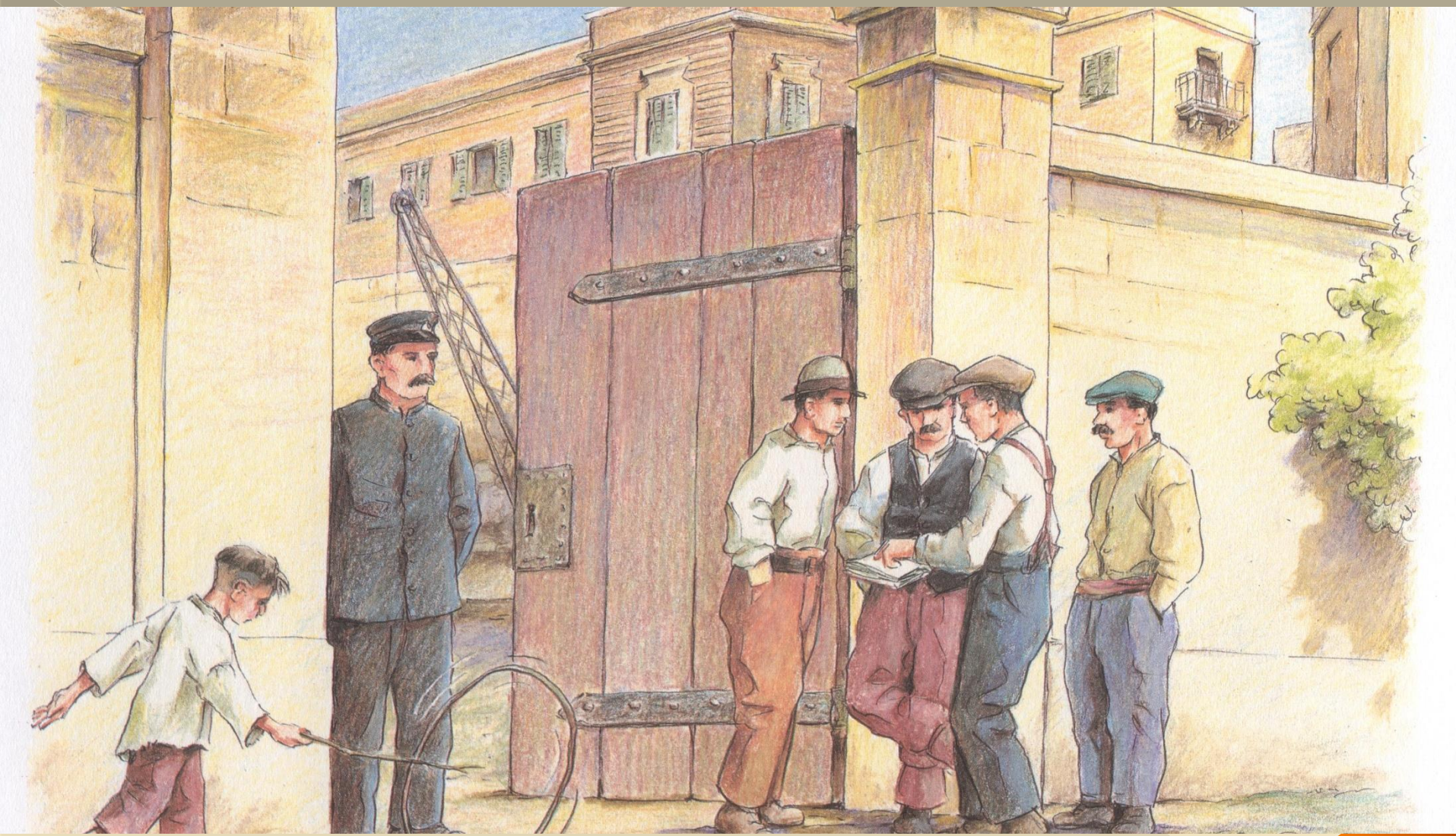
Twieled l-Isla nhar l-24 ta' Lulju 1886.



**Dun Ġorġ mill-ewwel induna kemm kien
żagħżuġ bil-għaqal.**



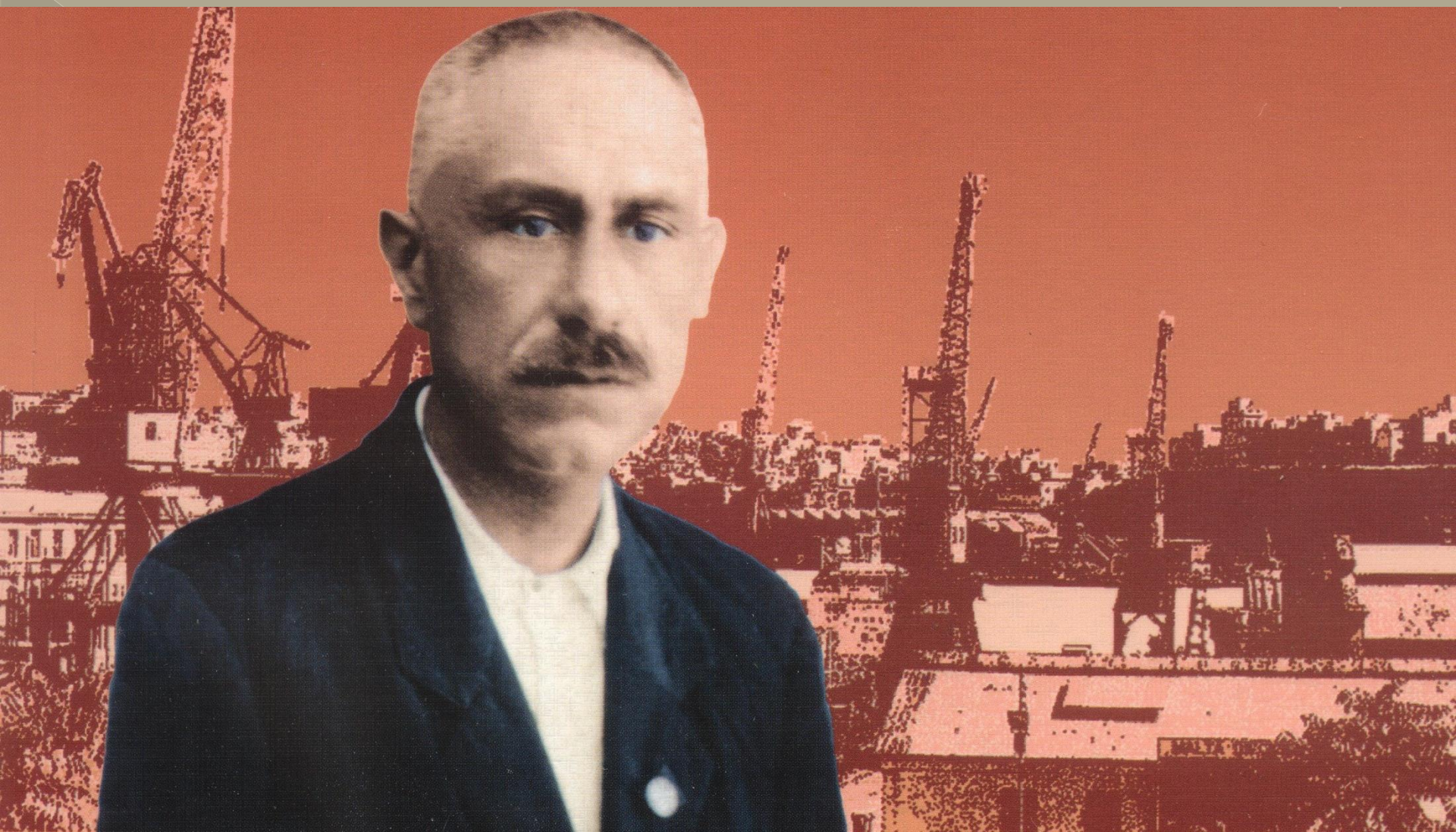
Wara li kien jisma' lil Dun Ġorġ kien joqgħod jaħseb jaħseb.



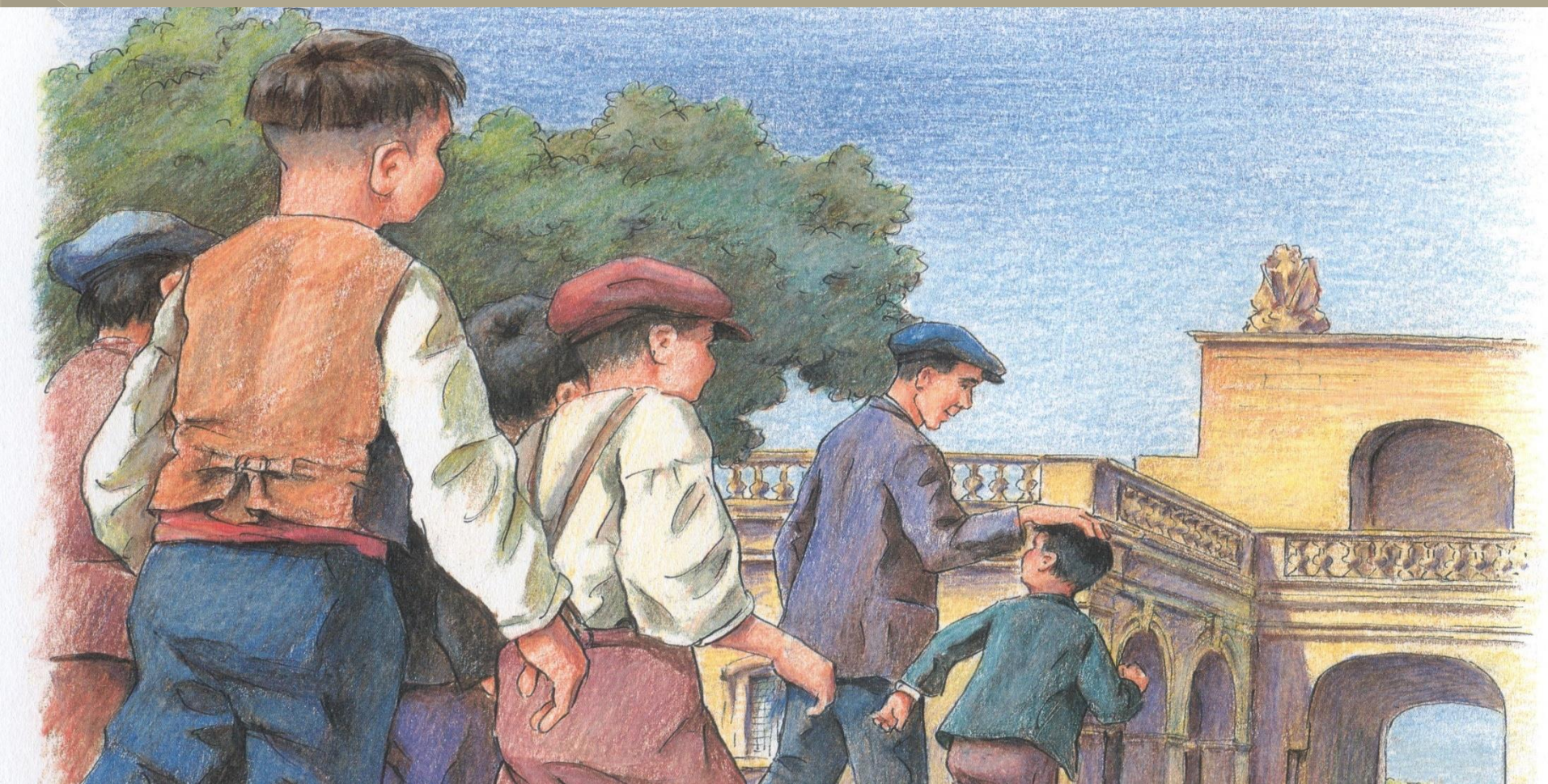
**Kien jaħdem fit-Tarzna.
Kien intelligenti u maħbub ħafna.**



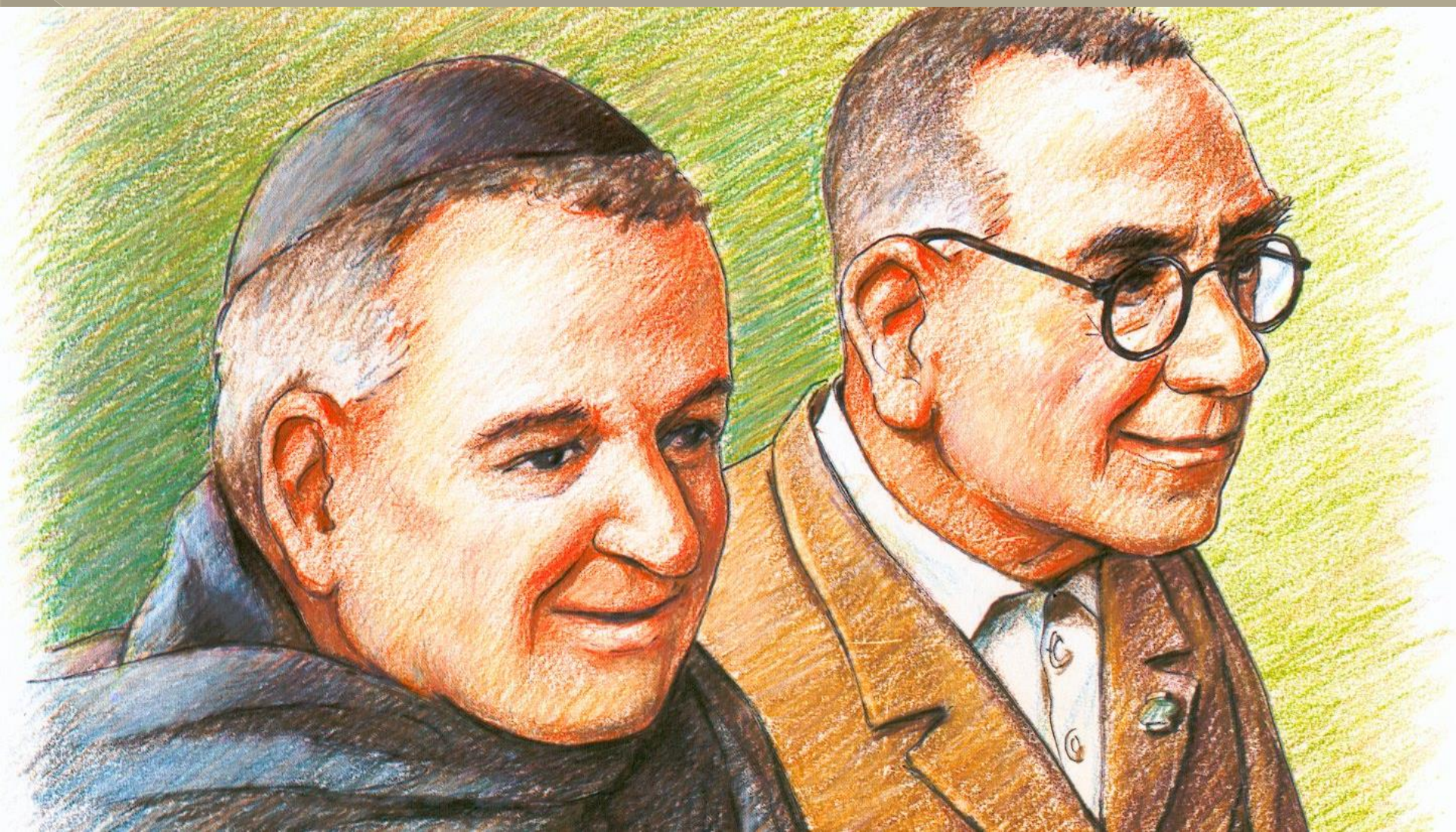
Ewġenju Borġ, allura, kien mudell tal-ħaddiema sħabu tat-Tarzna.



Shabu tax-xogħol laqqmuh ‘il-qaddis’ u l-ħanut fejn kien jaħdem kienu jsibuh ‘il-ħanut tal-appostli’.



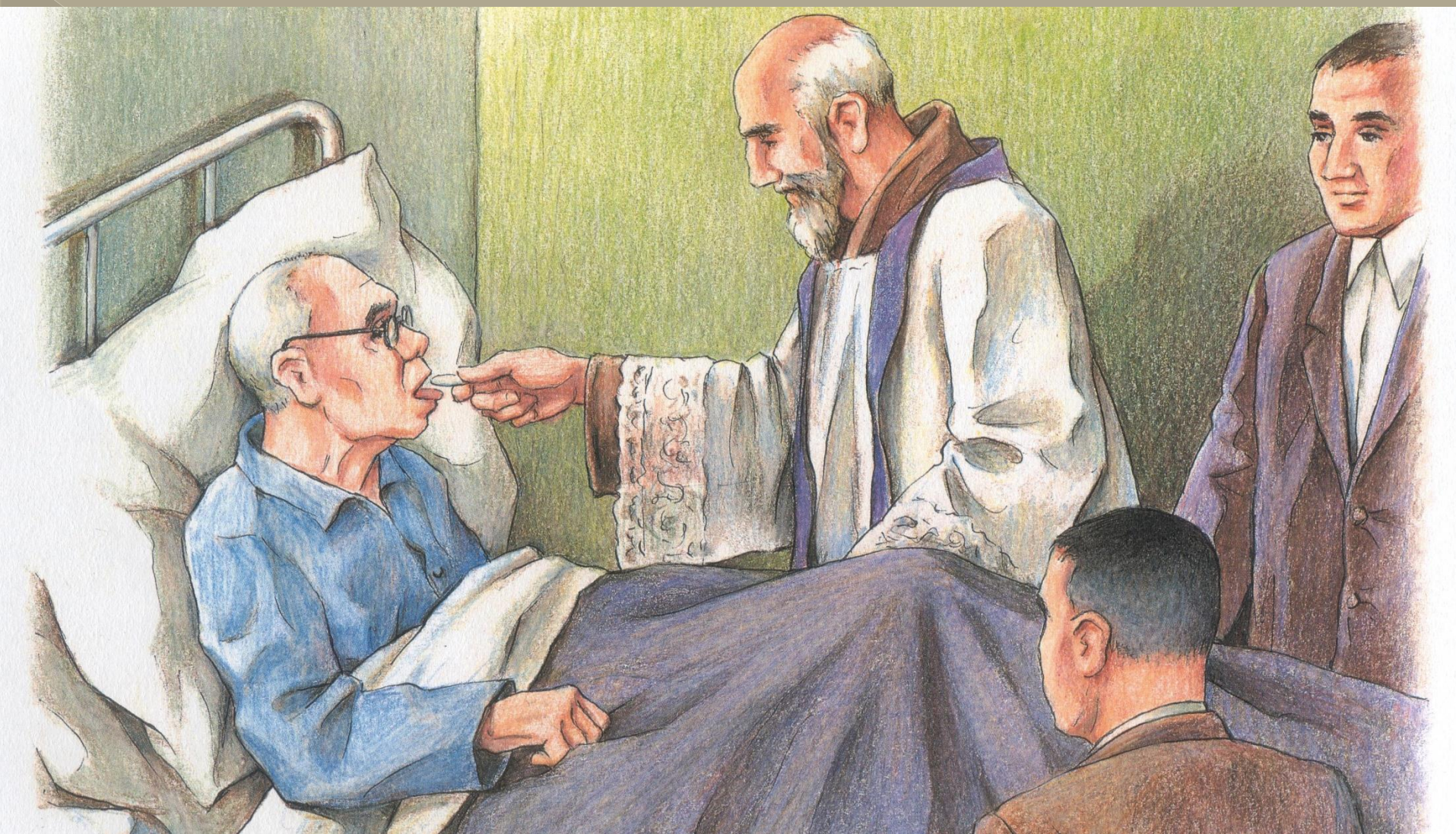
**Fl-1908 kera dar ġo Bormla u beda
jlaqqa' lill-irġiel u l-ġuvintur għat-
tagħlim.**



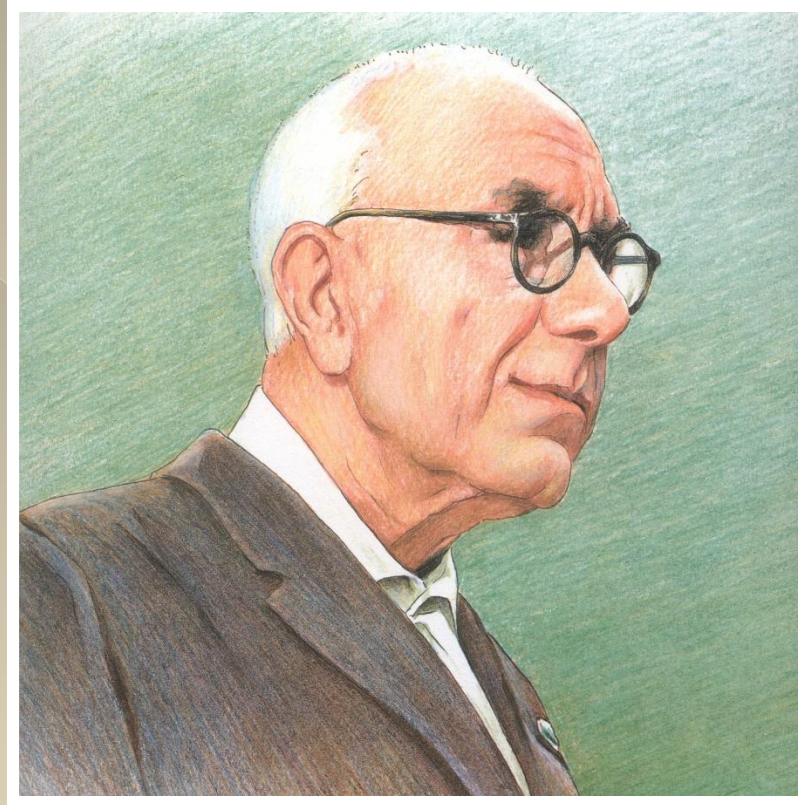
**F'1911 Dun Ġorġ għażlu bħala l-ewwel
Superjur Ġenerali tal-għaqda tiegħu.**



Kien jitolob hafna u lil Ġesù kien iħobbu tassew!



Miet fit- 12 ta' Marzu 1967.



Tmiem